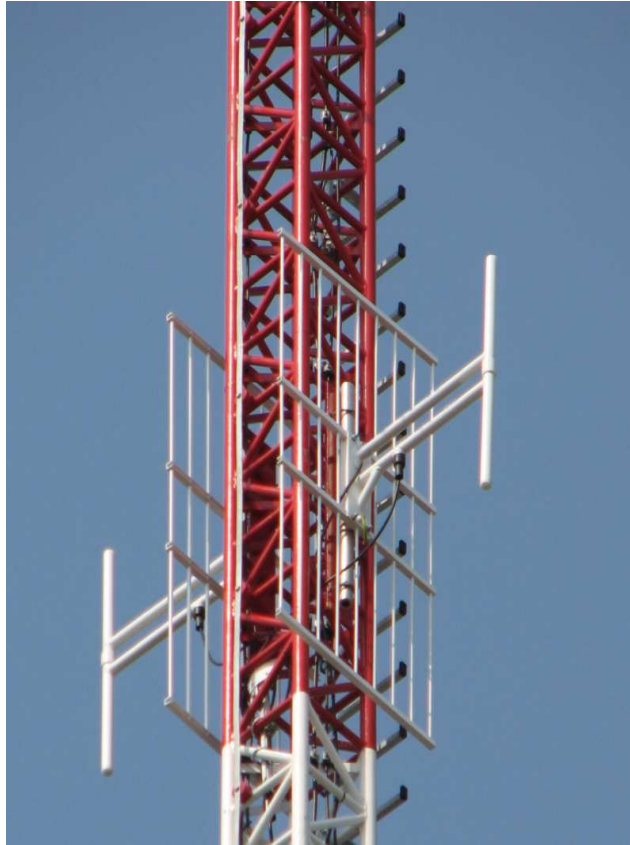


Base station antenna

BSG 100 FM



The panel type antenna with reflector forming radiation pattern. The antenna is produced in versions covering the whole band including VHF-FM 88-108MHz. In common-phase antenna arrays (cooperatnig with power divider PD series) enables form horizontal radiation pattern in the range of 140 – 360 degrees. An aluminium welded construction is covered with a powder varnish ensuring resistance to climatic conditions. A small active surface ensures resistance to ice and wind in all environments. A handle on a back side of antenna enables easy mounting direct at mast as a single antenna or in antenna arrays using toehold.

Considering a high emission power the antenna is recommended to application in VHF-FM broadcasting centers.

Folded-out construction optimize costs of transport and storing.

ELECTRICAL

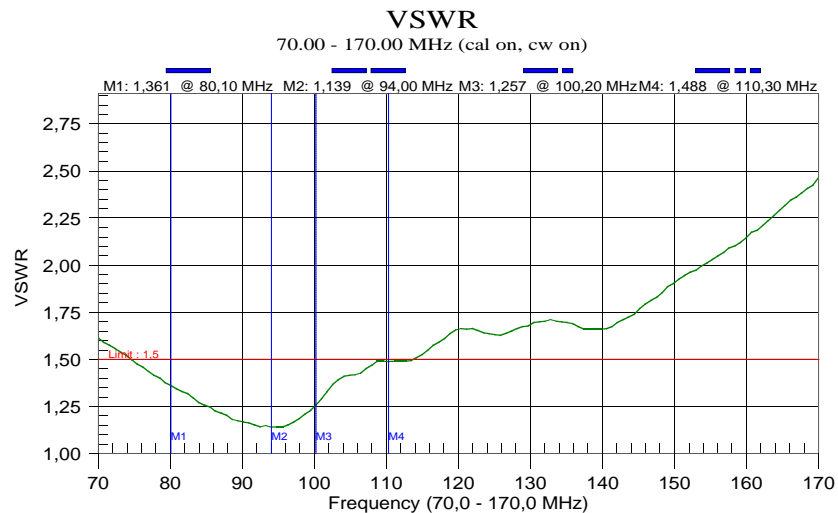
Gain	6 dBi
Radiation pattern	Directional
Impedance	50 Ω
Antenna type	panel
Maximum power	500 W or 3,5 kW (7/16 connector)
VSWR	$\leq 1,25$ @ 88-108 MHz, 1,15 at the center of bandwidth
Frequency range	76-112 MHz
Bandwidth	36 MHz @ SWR <1,5

MECHANICAL

Connector	N, 7/16
Material	Aluminium, welded
Polarization	Vertical, horizontal
Diameter of mounting mast	FI 150 - 480 mm
Weight	12 kg
Lightning protection	All metal parts are DC-grounded
Radiator dimensions	2175 x 1100 mm
Warranty period	48 months
Packaging	Carton box, wrap
Wind speed	200 km/h

CLIMATIC CONDITIONS

Temperature range	-40°C ÷ +70°C
Humidity	$\leq 100\%$ at +40°C

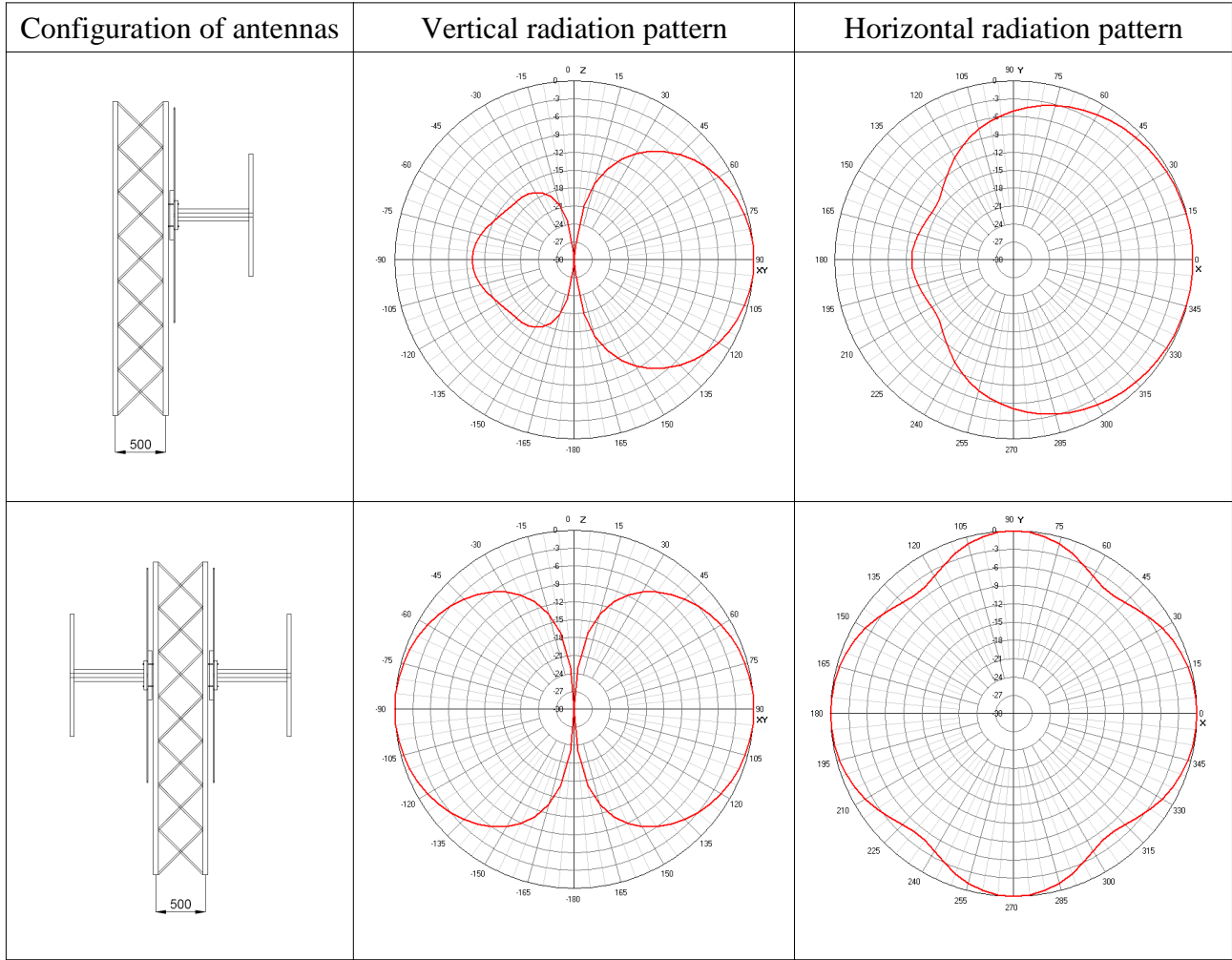


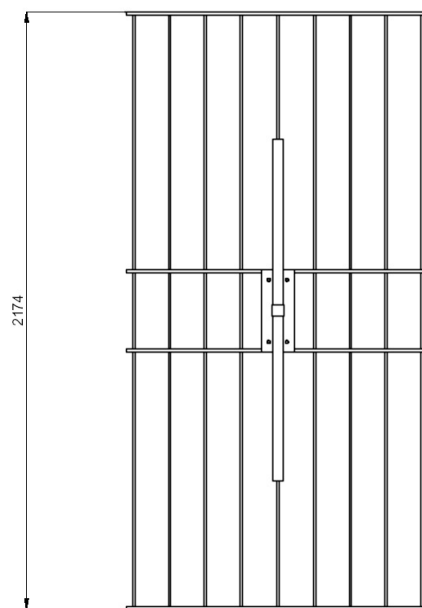
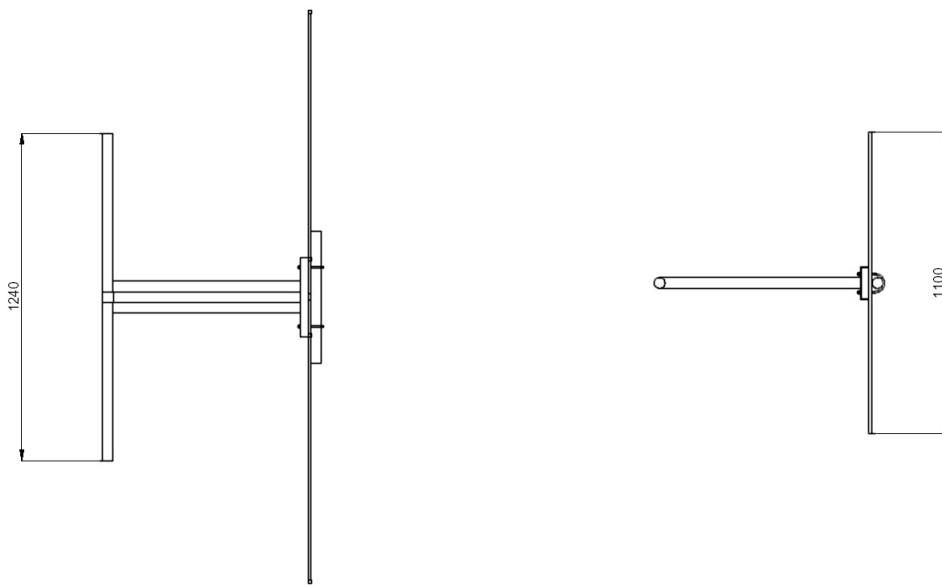
Resolution: 130
Model: MS

CAL:ON(COAX)
Serial #: 00000000

CW: ON
Smoothing: 0

VSWR





Dimensions of BSG 100 FM