

UMTS/HSDPA router UR5

new

dual SIM possible

speed up to 3,6 Mb/s



Connection of ATM

Interconnection PC or LAN

Interconnection of industrial control systems

Traffic, security and surveillance cameras

UMTS/HSDPA router UR5 interconnects large variety of equipment into Internet or intranet. Namely computers, controlling systems or LAN networks. Router is standardly equipped by ethernet 10/100 and USB type A. We can also deliver version with one more port RS232/RS485/MBUS or inputs/outputs (I/O) on request of customer. The second port enables to connect any device with above mentioned interface such as ATM, various industrial metering devices, GPS etc. by high speed UMTS/HSDPA wireless technology.

High speed technology UMTS allows to transfer data up to 384 kb/s. This is effective speed for example in picture transfer from traffic cameras (traffic density, crossroad cameras etc.) or security and surveillance sector (building control, street spotting etc.). Furthermore High Speed Downlink

Packet Access technology (HSDPA) increases speed for downlink up to 3,6 Mb/s. This extra downlink speed enables even transferring movie. If UMTS or HSDPA is not available UR5 switches to slower EDGE technology (up to 236 Kb/s) or GSM-GPRS (up to 85,6 Kb/s).

The main advantages of UR5 is extra high communication speed and a short response rate thanks to UMTS/HSDPA technology. Router is designed to work in the professional applications requesting large data transmission loads in a short time interval via mobile wireless network – ideal is for all camera applications. Other benefit is a user friendly configuration using web interface (HTTP) secured by password. It means you can configure parameters of UR5 from your computer by standard web browser (e.g. MS Explorer from all over the world).

for devices with interface

ethernet
USB ■ RS232 ■ RS485 ■ MBUS ■ I/O

DHCP

HTTP

NAT

NTP

L2TP

IPsec

DynDNS

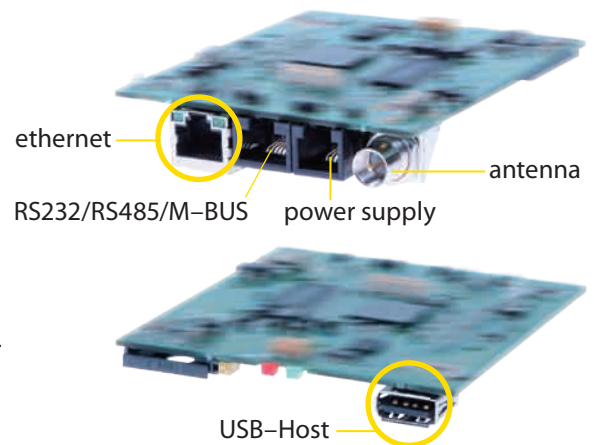
SMS info

Dual SIM

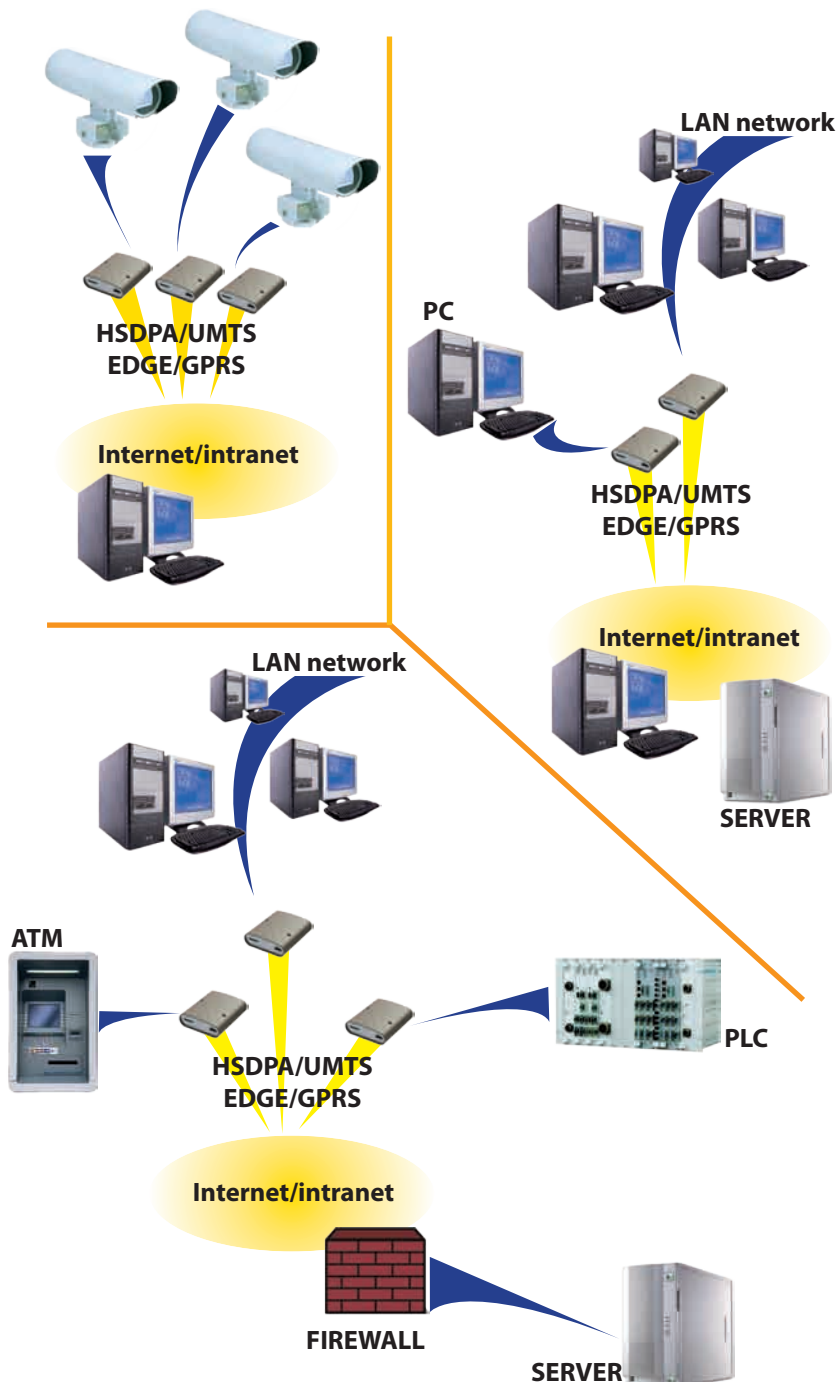
SNMP

UMTS/HSDPA router UR5 supports

- DHCP – automatic IP addressing in LAN network
- HTTP server – configuration via web server
- NAT – address translation between inside/outside networks
- SMS info
- IPsec – secure (cryptated) connection to server in outside network
- L2TP – protocol of tunneling interconnection
- DynDNS – access to router UR5 with dynamic IP address
- NTP – time synchronization
- GPRS/UMTS/HSDPA signalization by LED
- optional RS232/RS485/MBUS or I/O port available on request of customer
- on request of customer 2 SIM cards version possible
- remote controlling via SMS (on/off connection etc.)
- SNMP for diagnostics, MBUS or I/O port



Application examples of UR5



Technical specification

GSM module	SIEMENS HC25 or HC15
Frequency bands HC25	Tri-Band UMTS/HSDPA (WCDMA/FDD) 850/1900/2100 MHz Quad-Band GSM 850/900/1800/1900 MHz
Frequency bands HC15	Single-Band UMTS/HSDPA (WCDMA/FDD) 2100 MHz Dual-Band GSM 900/1800 MHz
HSDPA parameters	3GPP rel. 5 standard data speed 3,6 Mbps/384 kbps UE CAT. 1 až 6, 11, 12 data compression 3GPP TS25.212
UMTS parameters	W-CDMA FDD standard PS data speed – 384/384 kbps CS data speed – 64/64 kbps
GPRS parameters	GPRS multislot class 10, CS 1 to 4 EGPRS multislot class 10, CS 1 to 4, MCS 1 to 9
Temperature range	from -20 °C to +55 °C
Power supply	10 V to 30 V DC
Energy consumption	300 mW without transmission up to 3,5 W (GPRS) up to 5,5 W (UMTS/HSDPA)
Dimensions	30×90×102 mm (DIN ledge 35 mm)
Weight	150 g
Antennal connector	FME – 50 Ohm
User interface	Ethernet (10/100 Mbit/s) USB 2.0 type A host Optional Port 1 – on request RS232/RS485/MBUS or inputs/outputs (I/O)

contact

Conel s.r.o. | Sokolská 71 | 562 04 Ústí nad Orlicí | Czech Republic
Tel.: +420 465 521 020 | Fax: +420 465 521 021
E-mail: info@conel.cz | Web: www.conel.cz